

2019-20

PINSETTER PARTS



KEGEL

BUILT FOR BOWLING

Parts for A-2 Machines

**DEEP
PURPLE
URETHANE**

After years of searching for a urethane supplier who met our expectations of quality, we are excited to introduce our new line of Deep Purple Urethane replacement parts. These items are 100% made in the USA with urethane that is superior in quality. If you are looking for urethane products that are better, stronger, and will last longer, try our new Deep Purple Urethane line today.

**DEEP
PURPLE
URETHANE**

POWER LIFT TRACK

162-6305

Replaces Part 58-2434



POWER LIFT WHEEL

162-7001

Replaces Part 57-2036



BALL ACCELERATOR WIPE 23"

162-6127

Replaces Part 12-252377-000

BALL ACCELERATOR WIPE 36"

162-6128

Replaces Part 12-252377-000

DROP SWEEP BALL WIPER KIT

162-6129

Replaces Part 61-860246-000

DROP SWEEP CLOTH ONLY

162-6130

These Pinsetter Wipes are made from a durable cotton weave that will keep the ball transfer areas free from oil and dirt for many years to come. Machine washable. Velcro® included where applicable.



BALL LIFT

BALL RETURN

Parts for A-2 Machines

**DEEP
PURPLE**
URETHANE

DECK BUCKET (7, 10 PIN)

162-6301

Replaces Part 90-2803U

DECK BUCKET (1 PIN)

162-6302

Replaces Part 90-2802U

DECK BUCKET (5 PIN)

162-6303

Replaces Part 90-2837U

DECK BUCKET (2, 3, 4, 6, 8, 9 PIN)

162-6304

Replaces Part 90-2820U



DECK ROLLER URETHANE

162-7002

Replaces Part 57-2015

Made from high quality blended urethane.



DECK ROLLER

162-6004

Replaces Part 90-200114-000

The Deck Roller is designed to create a consistently smooth pin pivot to minimize the amount of pins that fall down or are placed off-spot. This solid one-piece design is made from high quality UHMW and requires no insert or bearings.



SAFETY DECK HOOK

162-8008

Replaces Part 12-350803-600

Our Safety Deck Hook is simpler, safer, and performs better. Mounting holes are threaded to eliminate the need for locking nuts, and this assembly is easy to install and adjust. The knife edge has been removed, reducing wear on the hook and deck post pin while decreasing the risk of injury. The inner radius has been increased to allow more surface contact of the deck post pin for a better grip. This Safety Deck Hook is made from billet aluminum.



TURNBUCKLE

162-6147

Replaces Part 12-200069-000

Hex shape makes adjustments much easier.



Parts for A-2 Machines

KEGEL KICKER MATERIAL - 25 FOOT ROLL

162-7000

This Kegel Kicker Material comes in 25' rolls with 3M® self-adhesive backing. Easily install this to the ball wheel.



THE DEVIATOR™ BALL WHEEL TENSIONER KIT

162-8400

The patented Deviator™ Ball Wheel Tensioner Kit will greatly reduce ball damage caused by pins being lodged between the ball and the lift rods.

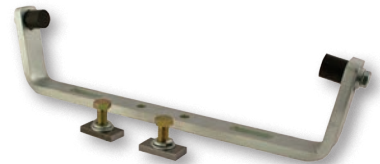
Eliminate premature belt wear by placing the ball wheel belt in a less stressful environment, which also gives you the ability to easily fine-tune the ball wheel belt tension.



Y-SWITCH BAR

162-8101

Minimize the effects of a possible machine breakdown with our Y-Switch Bar. Even the best maintained machines will have difficulties from time to time. Don't let this happen in the middle of a game, league, or tournament. This Y-Switch Bar offers dual mounting positions to provide a back-up option when there are problems with your machine. The slotted bumpers on this switch bar allow for fine-tune adjustments. With its cold rolled steel construction, this part offers you versatility and longevity.



Y-SWITCH

162-6306

Replaces Part 58-5153



BALL LIFT ROD STUD

162-6037

Replaces Part 12-400053-000

Precision-machined shaft made out of 1045 high strength steel.



SPEED REDUCTION KIT

162-8100

Increase frames per stop on your machine with our Speed Reduction Kit. Having fewer stops on your machine requires less work for pin chasers and mechanics, and also leads to more satisfied customers who are not spending their time waiting for repairs. This kit accomplishes that by slowing the pinsetter run speed and allowing the pin wheel to load more efficiently. This kit comes as a set of three reduction pulleys and the related hardware.



Parts for A-2 Machines

A-2 GUIDE ROLLERS



- High quality UHMW construction.
- Proven reliability of rubber seal bearings.
- Thicker flanges for better tracking.



162-8003



162-8074



162-8073



162-8002



162-8001



162-8011



162-8052

A-2 GUIDE ROLLERS URETHANE



- High quality urethane construction.
- Works with your existing bearings and flanges



162-7004



162-7005



162-7007



162-7003



162-7006

PART #	PART NAME	BEARING	SNAP RING	REPLACES PART #
162-8003	UPPER BALL WHEEL GUIDE ROLLER	162-9608	162-2401	12-400272-000
162-7003	UPPER BALL WHEEL GUIDE ROLLER URETHANE	N/A	N/A	12-4271
162-8074	SOLID UPPER BALL WHEEL GUIDE ROLLER *May order 162-8075 (Mounting Bracket) if converting from original OEM configuration	162-9606	162-2403	12-862823-000
162-7004	SOLID UPPER BALL WHEEL GUIDE ROLLER URETHANE	N/A	N/A	12-8623A
162-8073	SPLIT UPPER BALL WHEEL GUIDE ROLLER W/BACKET	162-9606	162-2403	N/A
162-8075	UBWGR UNIVERSAL MOUNTING BRACKET (Hardware Included)	N/A	N/A	N/A
162-6075	UBWGR UNIVERSAL MOUNTING BRACKET (Bracket Only)	N/A	N/A	N/A
162-8002	LOWER BALL WHEEL GUIDE ROLLER - SOLID	162-9601	162-2404	12-400240-000
162-7005	LOWER BALL WHEEL GUIDE ROLLER - SOLID URETHANE	N/A	N/A	90-4258
162-8001	LOWER BALL WHEEL GUIDE ROLLER - SPLIT	162-9601	162-2404	12-400268-000
162-7006	LOWER BALL WHEEL GUIDE ROLLER - SPLIT URETHANE	N/A	N/A	90-4260
162-8011	UPPER PIN WHEEL GUIDE ROLLER	162-9602	162-2401	12-400266-000
162-7007	UPPER PIN WHEEL GUIDE ROLLER URETHANE	N/A	N/A	12-4264
162-8052	LOWER PIN WHEEL GUIDE ROLLER	162-9601	162-2404	12-400263-000

Parts for A-2 Machines

ELEVATOR

PREFERENCE SYSTEM KIT

162-8078

The Kegel Preference System Kit is designed to alleviate the headaches associated with the Brunswick® A-2 and Jet Back pinsetters. Minimize the problems caused by the factory design in a reasonably priced, easy to install, low maintenance kit.



This kit eliminates 12 individual parts of the OEM assembly that when not regularly maintained and adjusted will eventually fail.



Our UHMW preference actuator is a low maintenance, low wear portion of the kit. The simple design eliminates the OEM spring rod bumper.



A powerful magnet is used to create a positive locking and unlocking of the preference system kit.



SPRING ROD

162-8023

Replaces Part 12-400193-000



Achieve more refined adjustments with our Spring Rod. The length and thread of the shaft have been extended to allow for more specific precision. This assembly features a separate shaft and head so each part is replaceable. Don't waste money replacing the whole item if only one piece becomes damaged. Our Spring Rod is built out of tough cold rolled steel.

162-6023 - Shaft

162-6123 - Head

SPRING ROD BUSHING

162-6025

Replaces Part 12-400803-000

This Spring Rod Bushing is made from tough cold rolled steel.



SPRING ROD BUMPER URETHANE

162-6307

Replaces Part 90-400123-000

SPRING ROD BUMPER

162-6050

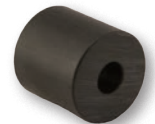
Replaces Part 90-400123-000

Replaces Part 12-400123-000

Our Spring Rod Bumper will not break down easily like other bumpers. It has a one-piece Nylon construction that has high durability.



DEEP PURPLE URETHANE



PIN DEFLECTOR PLATE

162-6133

Replaces Part 90-400840-600

Have your old metal deflector plates been welded time and time again? Try our Pin Deflector Plate made out of solid HDPE, a durable material that will require far less maintenance. Virtually indestructible.

PIN DEFLECTOR PLATE - URETHANE

162-6311

Replaces Part 12-4036



DEEP PURPLE URETHANE

Parts for A-2 Machines

PIN WHEEL CLUTCH IDLER PULLEY

162-8300

Having turn pan jams on your machine? Pin wheel brakes wearing through and damaging your belts? Solve this problem by eliminating the pin wheel brake with our Pin Wheel Clutch Idler Pulley.

This solid machined pulley with clutch bearing replaces the OEM Pin Wheel Brake or OEM Idler Pulley. Eliminate excessive pin wheel coasting which can cause an inconvenience and waste valuable time. When converting from the OEM Pin Wheel Brake, you will also need to order 162-8056 (Idler Arm).

162-9607 - Bearing for Pin Wheel Clutch Idler Pulley



JACK SHAFT

162-6079

Replaces Part 12-400810-000

Tired of jack shafts prematurely failing due to inferior designs, low quality steel, and inadequate press fits? Try the new Kegel Jack Shaft constructed out of 1045 high strength cold rolled steel and machined to exact specifications. This universal jack shaft ensures the proper bearing press needed for optimum performance. Black oxide finish.



JACK SHAFT BEARING

162-9609

Replaces Part 10-430001-000

When maintaining or replacing your existing jack shaft assembly, it is important to inspect your bearings, regrease, and/or replace as needed. Our Jack Shaft Bearings are the perfect complement to the Kegel Jack Shaft.



IDLER STUD

162-6145

Replaces Part 12-400027-000

Original factory specification maintained throughout this part.



LIFT ROD CAP

162-6308 - Small

Replaces Part 12-4107

162-6309- Large

Replaces Part 12-4108

162-6310 - Lower

Replaces Part 12-4109



**DEEP
PURPLE**
URETHANE

Parts for A-2 Machines

PIT MOUNTS

162-2034

Replaces Part 90-675000-000



Stay out of the pit! Are you tired of going back into the same pit conveyor assemblies and constantly replacing the conventional rubber pit mounts due to melting or structural failure? Our Neoprene Pit Mounts go through an astringent curing process, and incorporate a Grade 8 stud, making them more durable and ensuring they will not prematurely separate. A little more expensive, but well worth the extra cost!



CARPET COVER - SLIPPERY

162-6188

Replaces Part 12-860725-000



If your carpet covers are slowing down your pins, try this Carpet Cover. It uses a flat woven polyester that has a slick surface and gets the pins to quickly slide off the shaker board. It is more durable, lighter, and is easier to clean than the original version.



PVC PIT CARPET

162-6117

Replaces Part 12-300103-000

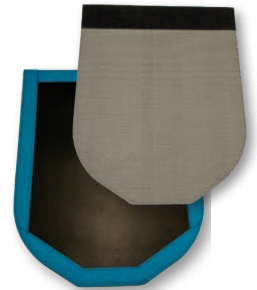
Prevent wear and tear with this PVC Pit Carpet made to withstand the toughest conditions. This Pit Carpet mounts easily over your worn carpet with ultra gripping Velcro® and is just as easy to remove for quick cleaning. This might be the last carpet you will ever need.



PVC CARPET SAVER

162-6120

This PVC Carpet Saver covers the high impact area of your pit carpet, leaving the edges of your carpet available to hold carpet covers. It installs in seconds with ultra gripping Velcro®. Add years of life to your existing pit carpets at a fraction of the cost.



ZIP CARPET

162-6132

Replaces Part 12-300103-000

Looking for a great alternative to the OEM pit carpets for a reasonable price? This Zip Carpet can be used to replace your old worn pit carpets or simply Velcro® it right on top of an existing one.

PIT TIERS KIT - 2 FRONT 2 REAR

162-8103

The Pit Tiers Kit is made of cold rolled steel. We have returned to the classic metal design. This kit is sold in sets of 4 (2 Front and 2 Rear). Pit mounts not included.



SHAKER MOUNT FRONT

162-8313

Replaces Part 57-3176

Hardware included.



SHAKER MOUNT REAR

162-8314

Replaces Part 57-3177

Hardware included.



Parts for A-2 Machines

JOGGER ARM

162-8024

Replaces Part 12-300163-000

Frustrated by alignment issues? Our Jogger Arm is the answer to this problem. The UHMW insert eliminates the need for the needle bearing and spacer. The needle bearings tend to wear over time due to the fact that they don't make a full revolution. The hole in our design is always centered, which cannot be done on a cast arm. This, combined with our precision machining, helps you achieve perfect alignment. This assembly is built from tough billet aluminum and also includes a rubber seal bearing.



162-9605 - Bearing for Jogger Arm

162-2404 - Snap Ring

JOGGER ARM BUSHING KIT

162-6051

Needle bearings tend to wear prematurely because they don't make a full revolution. Our Jogger Arm Bushing Kit replaces the needle bearing and spacer. It is made from UHMW and is sold as a set of two.



BEARING & HOUSING ASSEMBLY

162-6159

Replaces Part 12-300160-000

Rubber seals for easy maintenance.



NYLON PIVOT KIT

162-8216

Replaces Part 12-3150

Prevents "frozen" pit belt idlers.



CLAMP & PIN

R.H. 162-8202

Replaces Part 12-300168-000

CLAMP & PIN

L.H. 162-8203

Replaces Part 12-300169-000

Quiet your pit assemblies with direct replacements for both right and left hand clamps.



Kegel Heavy Duty Hand Cleaner removes stubborn industrial soils, grease, oil, tar, paint, and even lane oil from the skin without harsh solvents.

162-8501: 2.5 Liter Bottle w/Dispenser

162-0500: 2.5 Liter Hand Cleaner Refill (for use with dispenser)

162-0501: Hand Cleaner Dispenser

162-0502: 18 oz. Bottle



Parts for A-2 Machines

GEARBOX

DEGREE WHEEL

162-6034

Replaces Part 12-100044-000



Our Degree Wheel is designed to allow you to easily locate, mark, and adjust the rake cam to fit your pinsetter. It is not only useful for making quick visual adjustments, but also looks great on your machine with its highly polished finish. This Degree Wheel is made out of high quality billet aluminum.



WORM SHAFT OIL SEAL KIT

162-8237

Replaces Part 12-860603-000



CLUTCH PULLEY & BEARING ASSEMBLY

162-8236

Replaces Part 12-860717-000



CLUTCH PULLEY

162-8214

Replaces Part 12-860630-000



CLUTCH BEARING ASSEMBLY

162-8205

Replaces Part 12-860716-000



CLUTCH PULLEY LINING KIT

162-8218

Replaces Part 12-862864-003



CLUTCH DRIVE DISC LINING KIT

162-8219

Replaces Part 12-862864-005



CLUTCH BEARING BUSHING

162-6210

Replaces Part 12-8629B



TRIGGERING LINK

162-6234

Replaces Part 12-102363-000



CAM FOLLOWER SHAFT ONLY

162-6220

Replaces Part 12-100104-000



CAM FOLLOWER SHAFT KIT

162-8208

Replaces Part 12-1104



YOKE REPAIR KIT

162-8210

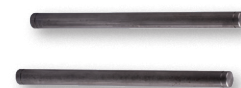
Replaces Part 12-860672-000



CLUTCH LEVER PIN

162-8226 (Package of 2)

Replaces Part 12-100165-002



CLUTCH YOKE PIN

162-8227

Replaces Part 12-100168-003

Parts for A-2 Machines



WORM SHAFT O-RING

162-8238 (Package of 10)
Replaces Part 11-625501-000



1 TO 1 RUBBER O-RING

162-8239 (Package of 2)
Replaces Part 11-625530-000



1 TO 1 MOUNT PLATE

162-6161
Replaces Part 12-100207-000



O-RING FOR CYCLE SOLENOID PIN

162-8228 (Package of 25)
Replaces Part 11-625538-000



OUT OF RANGE LINK

162-8209
Replaces Part 12-100337-000



COVER & PIN ASSEMBLY

162-8222
Replaces Part 12-860628-002



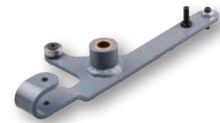
TRIP ROD LEVER

162-6223
Replaces Part 12-252356-000



CLUTCH RESET LEVER

162-8215
Replaces Part 12-102176-000



HOOK SELECTOR

162-8206
Replaces Part 12-100410-000



DETECTOR LINK

162-6221
Replaces Part 12-100040-004



BEARING RETAINER SPACER

162-6212
Replaces Part 12-100185-003



WORM SHAFT OIL SEAL

162-2124
Replaces Part 11-625000-000



ACTUATING LINK

162-6222
Replaces Part 12-250040-000



BEARING STUD KIT

162-8207
Replaces Part 8-334



CLUTCH BEARING

162-9202
Replaces Part 12-8629C

Parts for A-2 Machines

GEARBOX



HOOK SELECTOR PIN LARGE

162-6217
Replaces Part 12-1041D



HOOK SELECTOR PIN SMALL

162-6218
Replaces Part 12-1041E



HOOK SELECTOR KIT

162-8221
Replaces Part 8-380



DEEP PURPLE URETHANE

BELLCRANK

162-6312
Replaces Part 57-1236

PIT CUSHION

FOLLOWER LINK

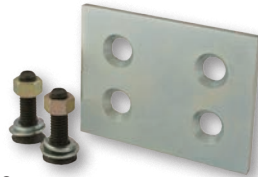
162-6016
Replaces Part 12-252346-000

Looking for a part that will fit your machine perfectly? Our Follower Link creates the expert fit every time due to its precision machining. Avoid broken links caused by brittle castings with the durable billet aluminum construction.



PIT CUSHION REPAIR KIT

162-6045
Use our Pit Cushion Repair Kit to replace worn out mounting holes. This kit allows you to mount directly on the kickback.



ROD END CAP 3/4

162-8309
Replaces Parts 57-2580



ROD END CAP 5/8

162-8310
Replaces Parts 57-2581

2 PER PACKAGE

DEEP PURPLE URETHANE

SUPER DUTY RAKE BOARD

162-8164



For a rake that will not break try our new high-density polyethylene rake boards. These rake boards are flexible, yet durable enough to take the most extreme impacts that unfortunately occur. At 5/8 of an inch thick, this may be the last rake board you ever buy. Hardware included and sticker friendly.



BIG CUSHION KIT

162-8105
Replaces Part 12-862580-000



STABILIZER ROD END R.H.

162-6167
Replaces Part 12-350122-003



STABILIZER ROD END L.H.

162-6168
Replaces Part 12-350122-004

Parts for A-2 Machines

TURRET POCKET

162-8111 (fits 1-7-10)
162-8110 (fits 2-3-4-6-8-9)



Are you tired of unwanted and excessive pin damage due to the design of the turret basket assembly? Do you constantly replace broken or damaged turret wires? Try Kegel's Turret Pocket. Made from high density polyethylene that is mounted on an adjustable bracket. Pocket fits all 9 positions and can be purchased with 2 different mounting brackets and hardware.



TURRET RING

162-6162 - Standard sized holes.
162-6165 - Oversized holes.
Replaces Part 12-150040-000



TURRET INTERLOCK PROBE

162-8104
Replaces Part 12-150086-000



SLIDE PLATE

162-8201
Replaces Part 12-150258-000



SHORT LINK

162-8213
Replaces Part 12-150289-000



TURRET CLUTCH LINING

162-8217
Replaces Part 12-862864-002



TURRET CLUTCH LINING UHMW KIT

162-8235
Replaces Part 12-8605

Parts for A-2 Machines

TURRET

FAIL TO INDEX LATCH

162-6100

The Fail To Index Latch removes excessive play in the indexing assembly. The installation for this is quick and it is very handy in a pinch.



TURRET CLUTCH DRIVE PULLEY (OFFSET)

162-6213

Replaces Part 12-150219-000



TURRET CLUTCH DRIVE PULLEY (CENTERED)

162-6214

Replaces Part 12-150306-000



MISCELLANEOUS

PIN GATE STRAP

162-6007

Replaces Part 12-860808-000

Reduce pin gate failure while increasing the lifespan of this part compared to the original version. This Pin Gate Strap helps minimize machine stops and waiting time of frustrated bowlers. Our Pin Gate Strap, machined from cold rolled steel, is made thicker to increase strength and durability. It also features a deeper recessed notch which allows for better seating to help reduce pin gate failure.

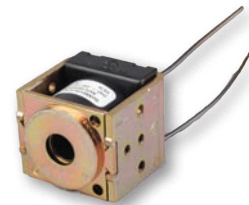


HEAVY DUTY CYCLE SOLENOID 208/230V

162-1201

Replaces Part 10-688006-000

Made by Guardian® Electric Manufacturing Company.



Parts for A-2 Machines

PULLEYS

Greatly reduce premature belt wear and poor tracking with our Pulleys. Increase the lifespan of your machine and save money on maintenance. Our one-piece design allows for precise belt tracking and fit. All assemblies include rubber seal bearings for accessibility and maintenance.



PULLEY IDLER FOR PIT CONVEYOR

162-6020
Replaces Part 12-300071-000

PULLEY IDLER FOR FLAT BELT

162-8015
Replaces Part 12-400297-000
162-9603 - Bearing
162-2402 - Snap Ring

PULLEY IDLER FOR V-BELT

162-8021
162-9603 - Bearing
162-2402 - Snap Ring



SILICON RECTIFIER KIT

162-8234
Replaces Part 12-7581

BEARINGS & SNAP RINGS

BEARING	SNAP RING	FITS ASSEMBLY NUMBER
162-9601	162-2404	162-8001, 162-8002, 162-8052
162-9602	162-2401	162-8011
162-9603	162-2402	162-8015, 162-8021
162-9605	162-2404	162-8024
162-9606	162-2403	162-8073, 162-8074
162-9607	N/A	162-8300
162-9608	162-2401	162-8003

Parts for GS[®] Machines

ELECTRICAL

MICROSWITCHES

SINGLE: 163-8001

Replaces Single Cherry[®]
(Part 47-053635-004)

DOUBLE: 163-8002

Replaces Double Cherry[®]
(Part 47-054700-004)

SINGLE: 163-8003

Replaces Single GSX
(Part 47-055323-004)



SETTING TABLE HARNESS (GSX ONLY)

163-8000

Replaces Part 47-245164-001

When you look at the current Setting Table Cable, you see a variety of colored wires. Have you ever wondered why its counterpart, the Setting Table Harness, only has four standard colors? Eliminate the confusion and don't waste time trying to match up wires with our new Setting Table Harness. This harness is hand-pinned by our wiring experts at Kegel. Simplify the troubleshooting process using our color-coded wiring system designed to match your existing Setting Table Cable assembly.



MISCELLANEOUS

PIN DETECTOR PLATE (GSX ONLY)

163-6001

Replaces Part 47-054298-001

Our Pin Detector Plate is very durable at the normal wear points. The solid design creates a better structure. To prevent excessive wear from pivoting, we have inserted bushings into our design.



Our ears feature a more durable dual support system.



RETAINING PIN

163-6002

Replaces Part 47-094789-003

Our Retaining Pin is notched deeper for more surface contact in relation to the square spindle. Made from high quality Nylon 6.



PIVOT PIN (PKG OF 10)

163-6004

Replaces Part 47-860005-000

Rugged Nylon 6 construction.



Parts for GS[®] Machines

SWEEP WAGON WHEEL

162-6099

Replaces Part 99-040249-004

Our Sweep Wagon Wheel is designed to prevent delamination (or separation). By installing parts that are more durable than the current market versions, you will end up saving money not buying as many replacements. The high grade UHMW construction of our Sweep Wagon Wheel will outlast the competitors' part and with less maintenance or repairs.



RED BELT 12.5 MM X 20 METERS

163-9020R

Replaces Part 47-275804-009



RED BELT 15 MM X 7 METERS

163-9007R

Replaces Part 47-024838-005

Achieve superior pin transport with this polyurethane belt. This smooth material was selected specifically for its ability to grip against the pin surface. OEM replacement at an affordable price, and you can use your current welding tools.

ORANGE BELT 12.7 MM X 20 METERS

163-9004

Replaces Part 47-275804-009

This new belt provides an economical option to our Red Belt. Easy to weld and slightly textured for positive pin transfer. An OEM replacement at a more affordable price.



Parts for GS[®] Machines

MISCELLANEOUS

HEAVY DUTY OVERFLOW SOCK

163-6006

Replaces Part 47-022531-000

This pin sock has a 6 inch wide PVC strip that bends at nearly 90 degrees and delivers the pins so they land gently and parallel to the transport band. Say good-bye to transport bands wearing out every two or three years due to repetitive pin impact. The extra wide mouth also helps prevent pin jams.



IMPACT STRIP

162-6125

Replaces Part 47-021010-003

Minimize the possibility of ball damage and pin damage due to worn out impact strips. For each of our products, we have done thorough testing and research. Using our knowledge and expertise, we are able to determine the best material for each specific application. In this location, HDPE is the most impact resistant material we could choose. Unlike the original plastic injection molded parts, our Impact Strip is machined from a solid piece of HDPE.



GUTTER ADAPTER

162-6124

Replaces Part 47-041721-002

Our Gutter Adapter helps eliminate dead wood. Don't waste time collecting pins and minimize customer complaints by installing this part. Our Gutter Adapter is machined from a solid piece of HDPE.



PIVOT BEARING

162-6126

Replaces Part 47-075352-004

Pivot Bearings are a vital part of your pinsetter and when they fail, it can result in a lot of damage to your machine. Our Pivot Bearing is made from 1018 cold rolled steel, the perfect material to withstand the immense weight and pressure placed on this part of your pinsetter.



T-BAND WHITE

163-6005

Replaces Part 11-635201-000

Our white T-Band is a heavyweight at 3.75 mm thick, but it retains its flexibility making it easy to install. It has great tracking and stays in place once adjusted.

This T-Band consists of a fabric top, rubber middle, and cloth bottom. With a 1-1/8" lap seam, you will experience no delamination. Works out of the box.



T-BAND BLACK

163-6026

Replaces Part 11-635201-100

Looking for great quality at an affordable price? Try our black T-Band as an OEM replacement.



Parts for GS[®] Machines

PIN WIPE

163-6022

Replaces Part 47-860003-000

Replaces Part 47-092527-000

UNDERGROUND BALL WIPE

163-6023

TRAP DOOR BALL WIPE

163-6024

ACCELERATOR BALL WIPE

163-6025



These Kegel Pinsetter Wipes (compatible with GS[®] machines) are made from a durable cotton weave that will keep the ball and pin transfer areas free from oil and dirt for many years to come. Machine washable. Velcro[®] included where applicable.

SHARK TRANSITION CAM

163-6008



Every pinsetter technician knows that a critical location in any machine is where the pin must change the direction it is traveling. In the GS[®] series pinsetters, the pins exit the shark assembly at a very sharp angle which can cause the pin to slip and then have to reorient as it travels down the distributor belts.

Our Shark Transition Cam provides a gentler angle for the pin to transfer between the shark and distributor belts. The head of the pin strikes the Shark Transition Cam instead of the side rail of the distributor, allowing it to absorb most of the rebound. Sold in a set of two cams with hardware. Use one set per pinsetter.

CROSSOVER WEDGE

163-8011



Another problem area within the GS series machines is the crossover area where the pin must reverse the direction of travel. Due to the gap between the pin and the side plates in the crossover area, the pin is likely to have an inconsistent transfer when changing directions. We have solved this problem with this Crossover Wedge. Much like our Shark Transition Cam, the Crossover Wedge facilitates a smooth transfer around the bend. Sold in a set of two wedges with hardware. Use one set per pinsetter.

2019-20

PINSETTER PARTS

www.kegel.net

Toll Free (US Only): 800 - 280 - BOWL (2695)

Fax: 863 - 734 - 0204

International: 863 - 734 - 0200

1951 Longleaf Boulevard
Lake Wales, FL 33859 USA

